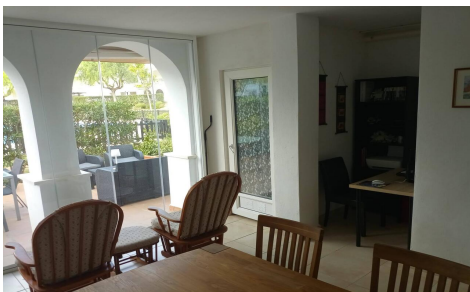




PPDLTCA8BB

in La Torre Golf Resort

€99,950



2



1



67m²



N/A



Reduced from €115.000. This west facing ground floor apartment on La Torre Golf Resort has one of the largest footprints of any apartments available due to the large terrace and the tiled garden area. The terrace has had glass curtains recently fitted to create an extra room and has direct access to the pool and gardens. The bathroom has also been updated which includes a walk in shower...(Ask for More Details!)

